

# CAPE ANN SHIP MODELER'S GUILD

VETERAN'S CENTER \* EMERSON AVE \* GLOUCESTER \* MA \* 01930

APRIL 2008

NEXT MEETING

WEDNESDAY, May 14, 2008, 7:00 pm  
GLOUCESTER VETERANS CENTER  
12 EMERSON AVE, GLOUCESTER, MA



President: Tony Ashdon  
Treasurer: Pat Cummings  
Secretary/Newsletter: Brad Bigelow  
103 Phillips Ave. Rockport, MA 01966  
[biggie16@gis.net](mailto:biggie16@gis.net)

Meeting opened at 7:00 P.M. by President Walter.  
Secretary's report: Accepted as written in Newsletter.  
Treasurer's report: Balance March 12, 2008 \_\_\_\_\_ \$406.19  
Credits: dues, interest \_\_\_\_\_ 80.08  
Balance: Oct. 11, 2006 \_\_\_\_\_ \$486.27

Correspondence: Newsletters, note from Mr. from Canada looking for plans of America's Cup boats.

Old business: This was the annual meeting and the election of officers. Fred Swart was elected as President with Doug O'Leary as vice president. Pat and Brad will remain as treasurer and clerk/secretary. With only 10 or so members present at meetings it is difficult to vary the officers.

Fred has checked the meeting room at the Maritime heritage site and reports it is scheduled to open by Memorial Day, 2008. He will contact the officials to find if we may meet there again this summer for our day work meeting.

As was suggested, several members brought in older models to give any guests something to see.

The Rockport Library display has been removed and was well received. We will try to repeat it periodically. Walter's show and talk at the Gloucester Library was also successful. It was video taped to be shown on Monday night. He discussed the several types of modelers, beginner, intermediet and expert with the tools needed for each level. Work areas were also brought up, the kitchen, spare room, garage and those fortunate to have a full shop.

His observation was that hand-outs would be preferable to the slide viewer as the pictures rarely show up well on a screen unless the room is very dark. Thank you Walter for a good performance, hope we can get the video for our file.

New Business: Brad has received a new video from the Midwest Model Shipwrights, this is also by Gus Agustin and is about carving wooden seas for a waterline model. As usual the quality is excellent as is the presentation. It is in the secretary's library and available.

Regarding ways to improve the showing at the Heritage Center, George suggested we have a few small models for the Heritage Center and Pat thought we could start a half-hull monthly, Walter would like a hand-out and a list of vendors for interested visitors. It all sounds good.

Nothing new about meeting with the local Chambers of Commerce for publicity and other things.

## TIPS and STUFF

Screen for painting: I have found using a piece of brass window screen in a frame works well for holding small parts for air-brushing. Put the part on a toothpick and push the toothpick into the screen a small amount. An advantage is that the pressured air/paint mix won't blow the parts away and the toothpick can be used to hold the part between painting.

Wax paper: When using wax paper for preventing adhesives from sticking to your bench or other parts you may find the paper does not have enough wax to really keep the parts apart. Try spraying the wax paper with "Silcone Dry Lubricant".

Small weights: Most hardware stores carry sheet lead for flashing chimneys. This may be easily cut and molded into small weights for holding parts for gluing.

## Coming Events

May 16<sup>th</sup> - 18<sup>th</sup>, 2008, 23<sup>rd</sup> Annual Midwestern Model Ships and Boats Contest and Show to be held at the Wisconsin Maritime Museum in Manitowoc, WI. Speakers Jeff Moses on *Lofting* and John Fox on *Ships-in-Bottles* have been proposed thus far.

April 26<sup>th</sup>, 2008, Northeast Ship Model Conference, Port "N" Starboard Conference Center, New London, Connecticut. The speakers are planned to be appraisers. Always a good time with Mystic Seaport only 15 minutes away and several national motel chains nearby. Conference was great, details next month.

June 7<sup>th</sup>-8<sup>th</sup> 2008: Model boat show at the Danvers Library put on by the Torigian Center modelers.

August 2 & 3, 2008: Salem Maritime Festival, Derby Street, Salem, Mass. There will be concert Friday evening. This is usually a good time with music, crafts, reenactments, and food. There are usually a few CASMG members there.

August 23 & 24, 2008: Antique & Classic Boat Festival, Hawthorn Cove Marina, Salem, MA. (Constitution Club)

### Show & Tell

Good show time this month, Pat brought in an old LIGHTNING she had made a few years ago. Still looks really great.

Pat and Ernie both had the latest MELONSEED hulls, really hard to make very thin hulls of fibreglass boats.

Brad had a plaster mold made from one of Ernie's MELONSEED hulls to try to fabricate a fibreglass hull for them to try. This effort was based on an article by Steve Wheeler in the July/August 2006 issue of Ships in Scale.

Pat also is trying to build a plank on frame model of the MELONSEED.

Ed Parent showed us his *USS Vindicator* model in it's case. Very nice job as usual. Ed also was working on the paddlewheel for his latest creation, the *USS Cricket*. He made a circle of copper wire, then used stiffened carpet thread for the spokes, covering them with very thin slices of wood for the actual paddles. Really fine work.

His plank on frame *USS Sheandoah* is coming along pretty well.



PAT'S LIGHTNING



TONY'S LOBSTER BOAT-SOUTH ENDER



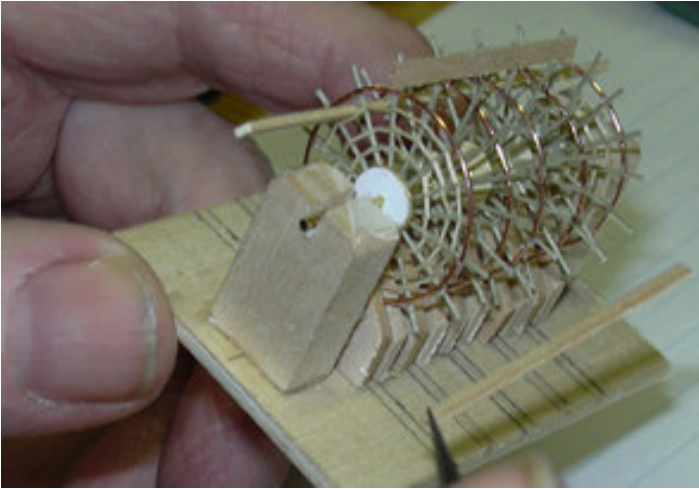
TONY'S DUCK BACK LOBSTER BOAT



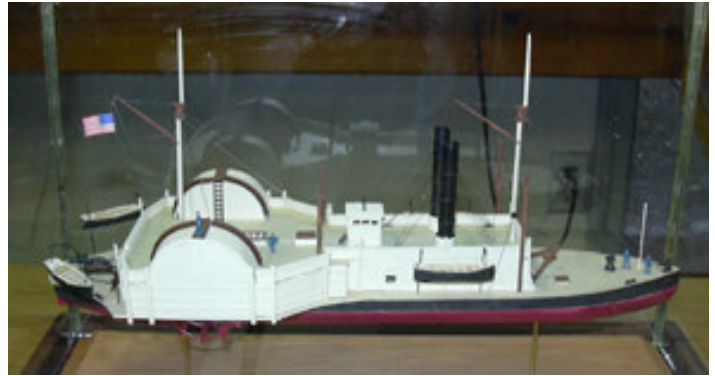
PAT'S MELONSEED HULL



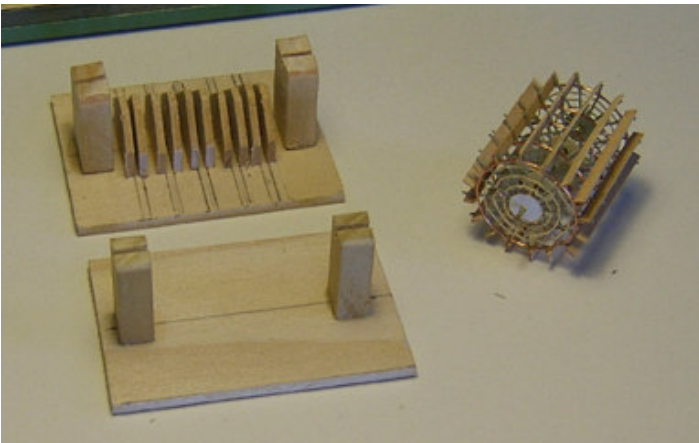
BRAD'S PLASTER CAST OF MELONSEED HULL



ED'S PADDLE WHEEL, WHAT A JOB.



ED'S USS VINDICATOR, FINISHED



FINISHED PADDLEWHEEL AND JIG FOR MAKING IT.



PAT AND ERNIE'S HALF MODEL

SOME PICTURES FROM THE NORTHEAST CONFERENCE



ANOTHER MELONSEED WITH THE CENTERBOARD CASE  
INSTALLED



BATTLESHIP USS NEW YORK BY FRED HUTCHINS



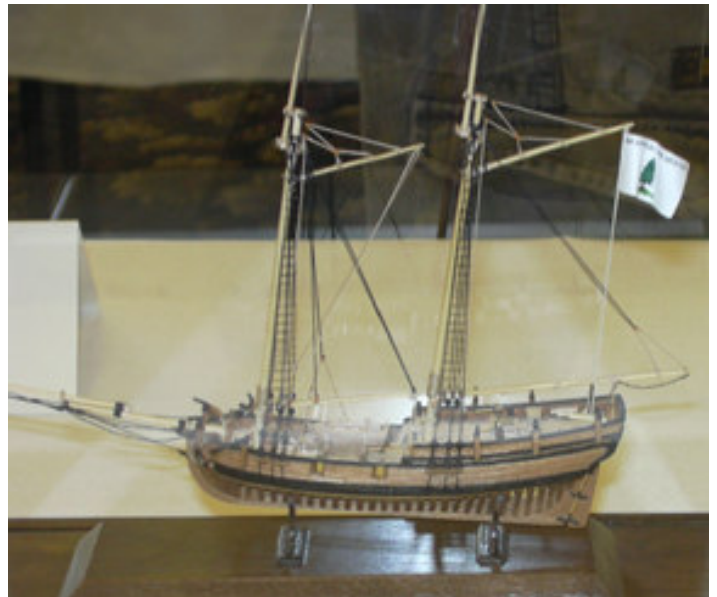
HMS BOUNTY DIORAMA, MEN AND BOATS ON FAR SIDE,  
PEOPLE BLOCKED PICTURE



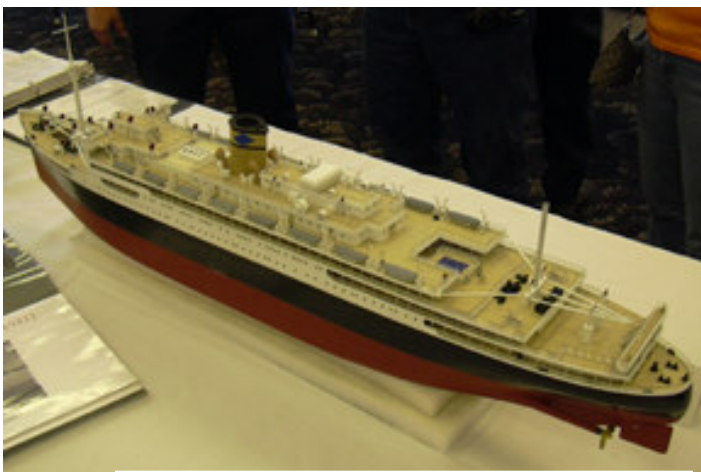
COAST GUARD BARQUE EAGLE  
BUILDER UNKNOWN-SORRY



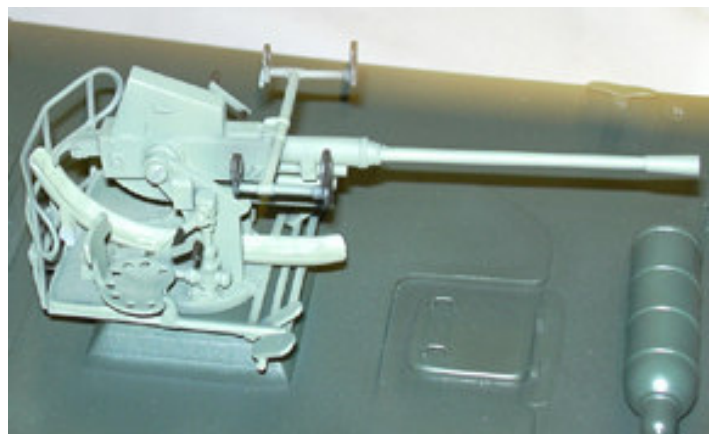
CHRIS-CRAFT BY JOE JORDAN



HANNA – JOE MULQUEEN



SS URUGUAY (1941)  
DAN PARISER



DECK GUN FROM WARSHIP – SORRY, NO NAME

